

# Moat Park Garden

Plans moving forward





## Moat Garden

### KEY

- 1 - Fielder's Meadow
  - 2 - Lake & Picnic Area
  - 3 - Beach & Water Play
  - 4 - Playgrounds
  - 5 - Toilets
  - 6 - Community Room / Bowling Club
  - 7 - Cafe
  - 8 - Bowling Greens
  - 9 - Picnic Area
  - 10 - Tennis Courts
  - 11 - Moat Garden & Dog Walking Area
  - 12 - Bishop's Meadow
  - 13 - Spanish Civil War Memorial
  - 14 - Rose Gardens
  - 15 - Pryor's Bank
  - 16 - Sculpture Garden
  - 17 - River Walk / Thames Path
- Base map courtesy of CBA

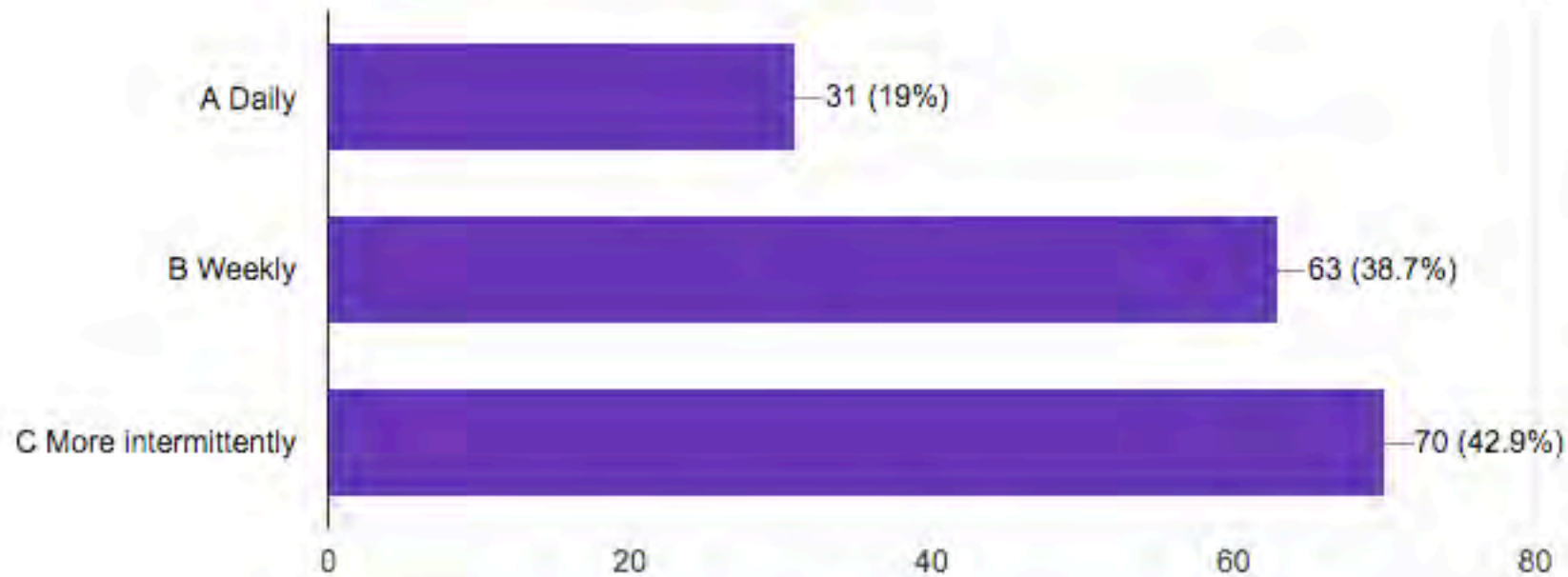




# How often do you visit the garden?

How often do you come to the Moat Garden?

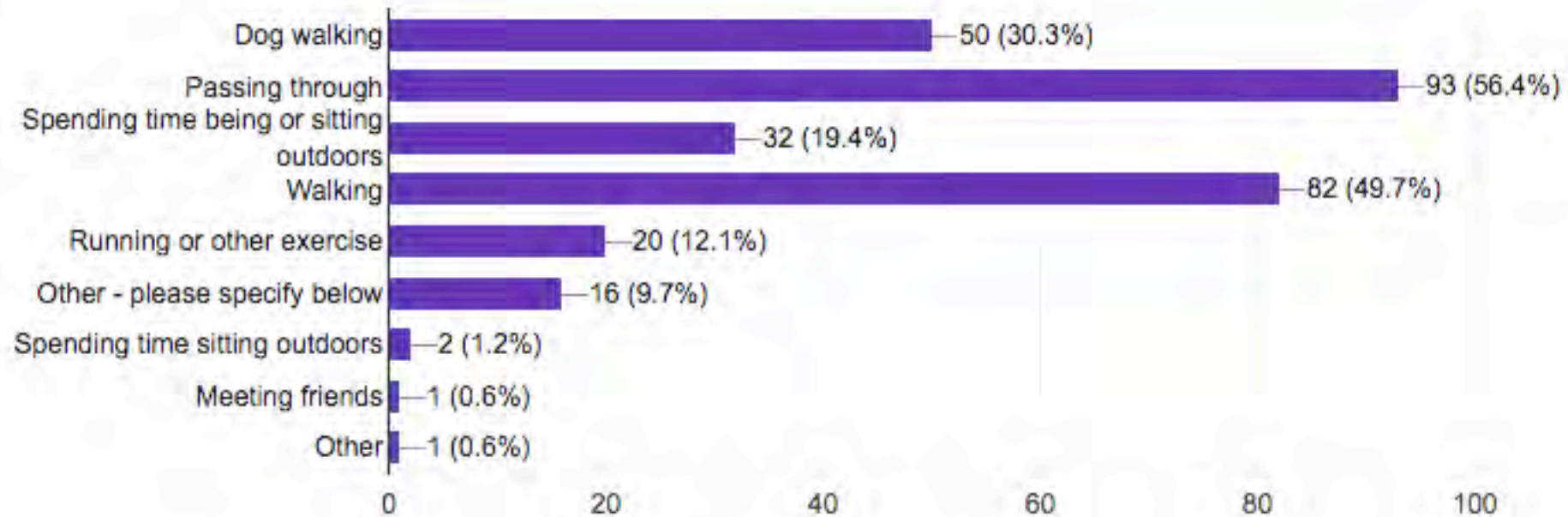
163 responses



# How often do you visit the garden?

Do you have a specific purpose when you visit this park

165 responses



# What do you like best about this space?

- Wilderness, greenery, birds, feeling close to nature, sense of escape, wild plants, other wildlife
- Tranquil space, quiet, fewer people than elsewhere
- Way to avoid walking along Fulham Palace Road, avoid the cars and fumes
- Dog pen area good for dogs
- A place to run
- Like the historical features





# What do you think could be improved?

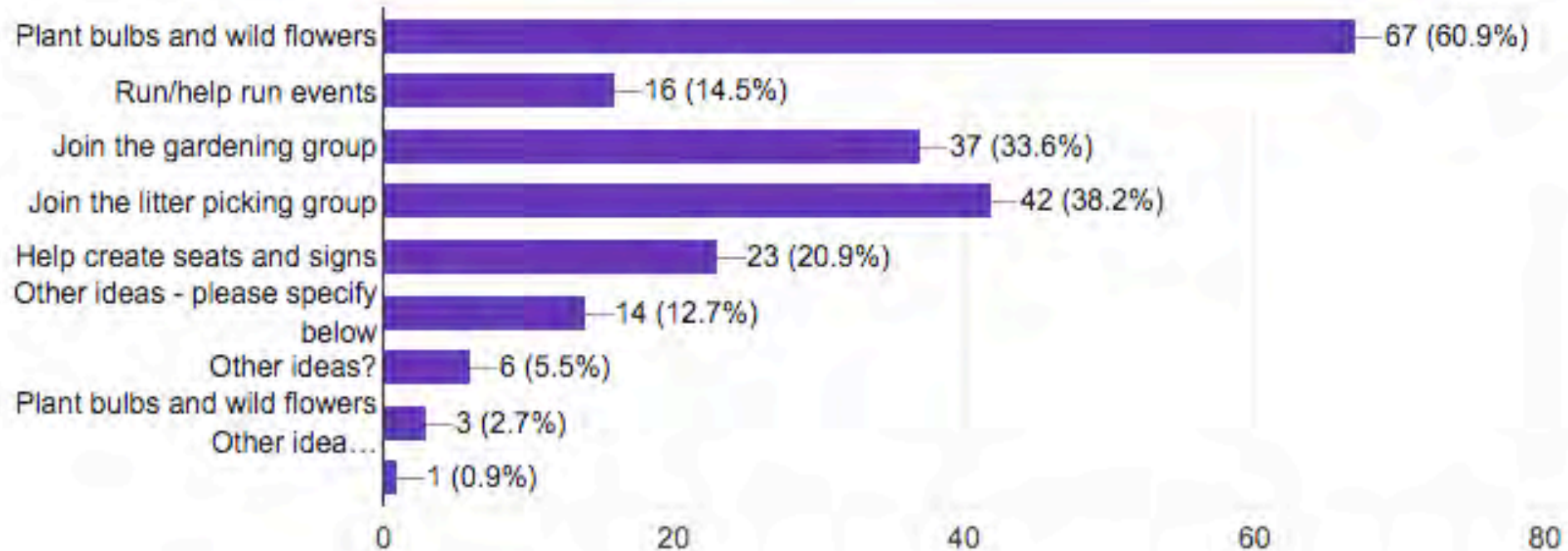
- Looks uncared for: fix potholes, clear rubbish and keep clean
- Fix/improve seating
- Improve landscaping – more colour from flowers
- Dog enclosure needs improving – better fencing to keep dogs in and improve gate
- Doesn't feel safe



# Would you like to help improve it?

Would you like to help improve it? For example:

110 responses





# Other ideas about what might help improve the garden?

- More flowers for nectar and pollen
- Add wildlife habitats
- Add natural features for children to enjoy
- Become a learning/educational area – get the local school(s) involved
- Make it feel safer. Give people a reason to go there
- It could use a bit more light, perhaps a bit of cutting back

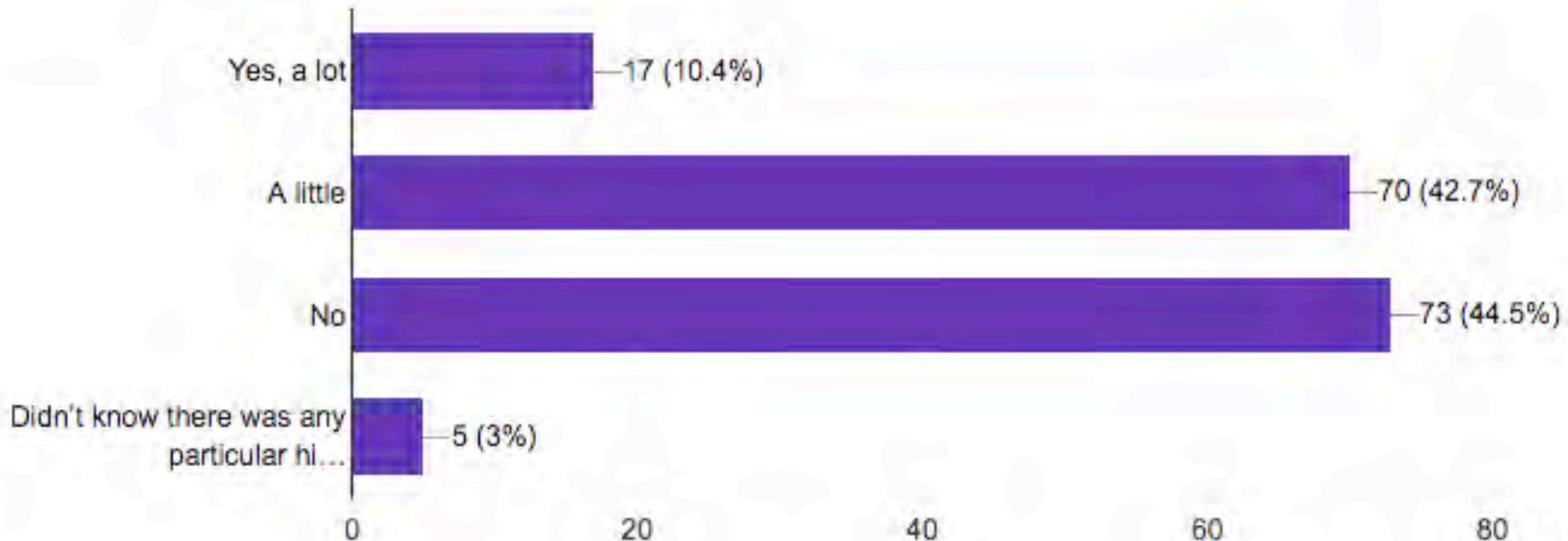




# Do you know anything about the history of the space?

Do you know anything about the history of the space?

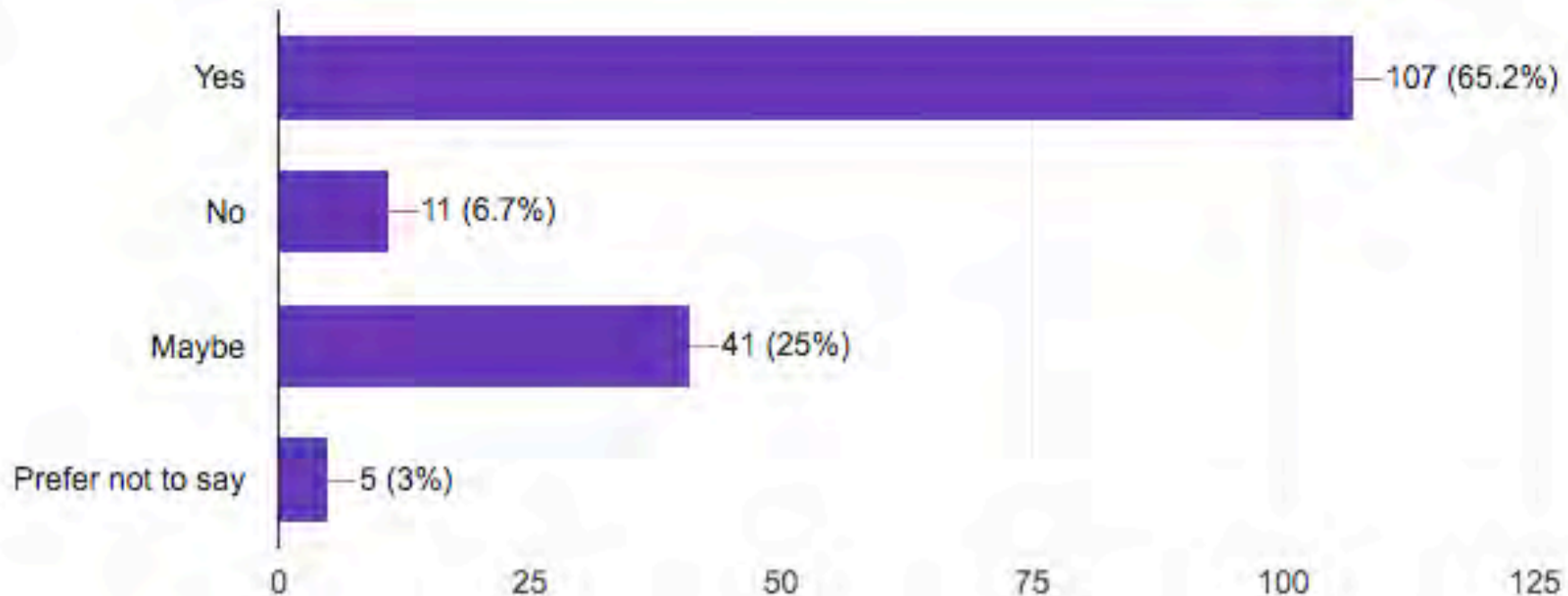
164 responses



# Would you like to learn more about wildlife that can be found in the Moat Garden?

Would you like to learn more about wildlife that can be found in the Moat Garden?

164 responses





# Moving forward – the vision in response to feedback

- Develop a group that can focus community involvement in improving the space
- Make the space more attractive while maintaining the wilderness/oasis feel
  - Add flowers so there is more colour through the year
- Develop the space as a wildlife haven
  - Add flowers to provide nectar and pollen
  - Add wildlife habitats including bird boxes, bee/insect hotels etc
- Improve seating and add a covered area for events and activities
- Add educational elements for both adults and children so schools can visit
  - About the history of the area
  - About the plants and wildlife that can be found
- Ensure the space looks more cared for
  - Improve seating
  - Improve dog area
  - Ensure litter collected regularly

# Moving forward – next steps

- Community involvement 2021:
  - Grow flowers for the space, plant them out and water them through the summer
  - Arrange for groups to pick up litter on a regular basis
  - Draw up plans/design to improve the space with:
    - new seating
    - covered area
    - improved dog area
    - more flowering/edible plants
    - wildlife habitats
    - educational signage about history and plants/wildlife
  - Apply for funding to implement plans/design
  - Organise events once Covid restrictions are relaxed



# Inspiration from other projects:

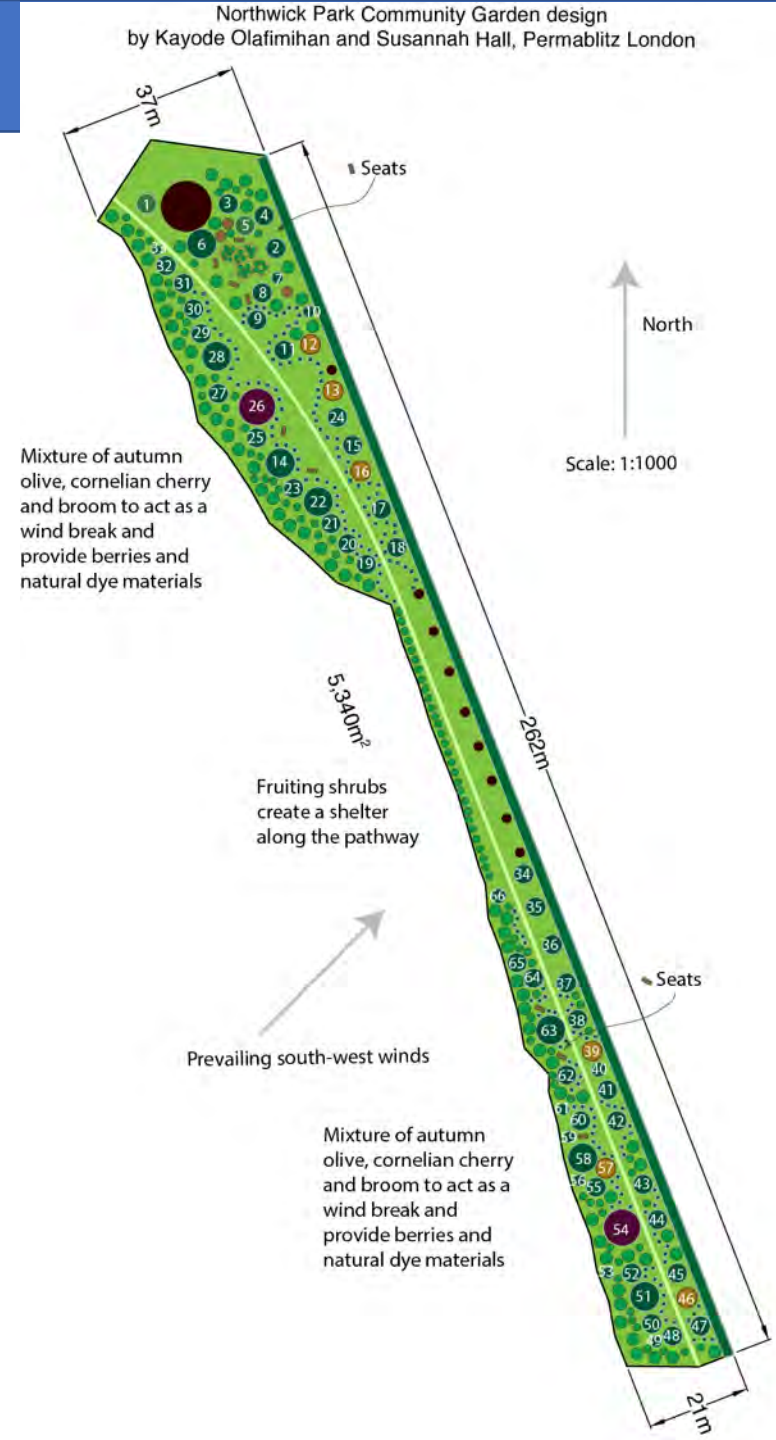
- Northwick Park Garden establishing a food forest in their local park
- 60 people at the permablitzes
- Lots of people watering

# Northwick Park Community Garden





# Northwick Park Community Garden



# Northwick Park Community Garden





# Northwick Park Community Garden





